

Relação do aço

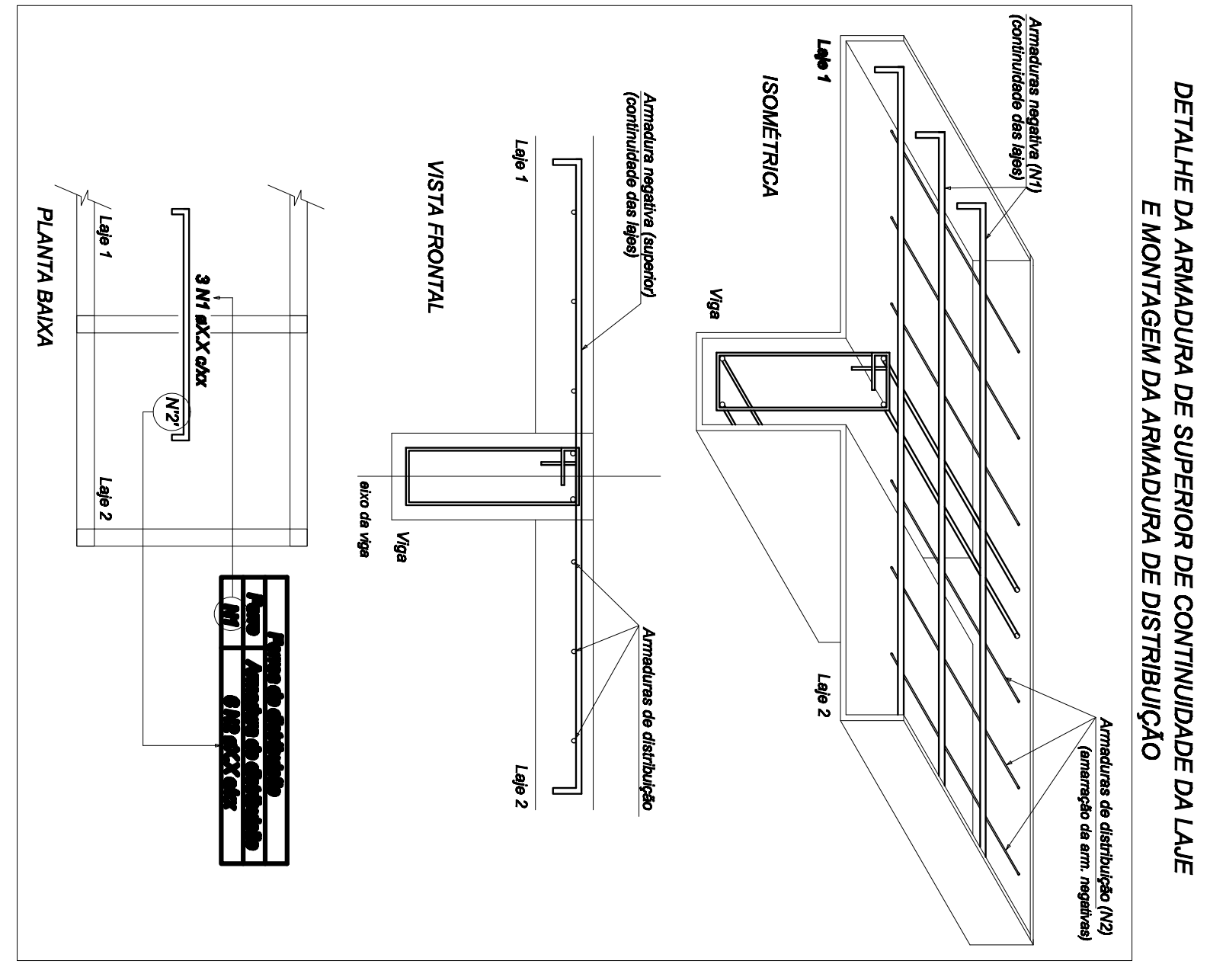
ACO	N	DIM	Q	UNIT	C.TOTAL
		(mm)		(cm)	(cm)
CA50	1	5,0	7	80	420
	2	5,0	9	57	513
	3	5,0	12	76	612
	4	5,0	10	107	1070
	5	5,0	7	23	161
	6	5,0	30	42	1260
	7	5,0	96	112	6272
	8	5,0	12	79	1638
	9	5,0	12	81	1638
	10	5,0	9	61	1233
	11	5,0	15	189	2835
	12	5,0	15	8	331
	13	5,0	8	8	2648
	14	5,0	20	8	331
	15	5,0	14	14	294
	16	5,0	12	12	378
	17	5,0	12	188	2016
	18	5,0	26	142	3692
	19	5,0	15	142	3692
	20	5,0	15	VAR	VAR
	21	5,0	18	VAR	VAR
	22	5,0	14	VAR	VAR
	23	5,0	14	VAR	VAR
	24	5,0	16	200	2400
	25	5,0	16	313	5008
	26	5,0	10	VAR	VAR
	27	5,0	17	148	1184
	28	5,0	18	188	1506
29	5,0	16	226	3618	
30	6,3	17	311	5287	
31	6,3	37	VAR	VAR	
32	6,3	10	222	2220	
33	6,3	18	191	2276	
34	6,3	26	122	1576	
35	6,3	26	122	1576	
36	8,0	1	66	66	
37	8,0	1	89	89	
38	8,0	18	188	1506	
39	8,0	18	188	1506	
40	8,0	19	226	3618	
41	8,0	24	VAR	VAR	
42	8,0	24	VAR	VAR	
43	8,0	16	155	2480	
44	10,0	3	139	417	
45	10,0	3	VAR	VAR	
46	10,0	3	VAR	VAR	
47	10,0	3	VAR	VAR	
48	10,0	22	63	1386	
49	10,0	6	190	1140	
50	10,0	6	190	1140	
51	10,0	2	77	281	
52	10,0	2	77	281	
53	10,0	1	233	1754	
54	10,0	1	64	64	
55	10,0	23	339	7797	
56	10,0	7	241	1687	
57	10,0	4	183	732	
58	10,0	18	VAR	VAR	
59	10,0	27	VAR	VAR	
60	10,0	7	VAR	366	

Resumo do aço

ACO	DIM	C.TOTAL	PESO - 10%
	(mm)	(kg)	(kg)
CA50	6,3	332	89,3
CA50	8,0	204,2	88,6
CA50	10,0	310,8	210,8
PESO TOTAL		780,8	132,3
CA50			386,6
CA50			132,3

Faixa de distribuição

Faixa	Armadura de distribuição
N44	7 N1 ø5,0 ç20 C-60
N46	9 N2 ø5,0 ç20 C-57
N47	3 N3 ø5,0 ç20 C-54
N48	12 N4 ø5,0 ç20 C-76
N49	10 N5 ø5,0 ç20 C-57
N50	10 N6 ø5,0 ç20 C-57
N53	30 N7 ø5,0 ç12 C-42
N55	56 N8 ø5,0 ç8 C-112
N58	12 N9 ø5,0 ç20 C-139
N59	8 N10 ø5,0 ç20 C-71
N57	8 N11 ø5,0 ç20 C-48
N28	8 N12 ø5,0 ç20 C-81
N29	8 N13 ø5,0 ç20 C-81
N28	20 N14 ø5,0 ç13 C-VAR
N39	14 N15 ø5,0 ç20 C-394
N39	9 N16 ø5,0 ç20 C-394
N28	12 N17 ø5,0 ç20 C-314
N28	12 N18 ø5,0 ç20 C-314
N28	28 N19 ø5,0 ç20 C-142
N41	15 N20 ø5,0 ç20 C-VAR
N42	16 N21 ø5,0 ç20 C-VAR
N30	16 N22 ø5,0 ç20 C-334
N31	14 N23 ø5,0 ç20 C-VAR
N33	8 N25 ø5,0 ç20 C-313
N43	8 N25 ø5,0 ç20 C-313
N34	10 N26 ø5,0 ç20 C-VAR
N34	7 N12 ø5,0 ç20 C-169



Características das materiais

Elemento	Isq.	Eca	Absorvimento
	(kg/cm²)	(kg/cm²)	(mm)
Viga	300	260716	80
Laje	300	260716	80
Separadores	200	212874	80

ESTADO DE SANTA CATARINA
SECRETARIA DE ESTADO DA INFRA-ESTRUTURA
DEPARTAMENTO ESTADUAL DE INFRA-ESTRUTURA
DIRETORIA DE OBRAS CIVIS - DIIOC

DIIOC

PROJETO PADRÃO - OBRAS
ARMADURA DAS LAJES - NEGATIVAS
COBERTURA

17

RESUMO DO PROJETO: **SIT - SECRETARIA DE ESTADO DA ASSISTENCIA SOCIAL, TRAVELADO ELIZABETH**

LOCAL: **BRASILELA/SC**

TIPO DE PROJETO: **ESTRUTURAL**

CHARACTERÍSTICAS: **PROJETO PADRÃO - OBRAS**

PROFESSORES: **ANA CAROLINE DE SOUZA, ANDRÉ LUI DE SOUZA**

AUTOR DO PROJETO: **ANDRÉ LUI DE SOUZA**

AVULSOS ENGENHARIA E AVALIAÇÕES LTDA

AREA: 220,04 m² **ESCALA: INDICADA** **DATA: 08/05/2018** **REVISÃO: 01**