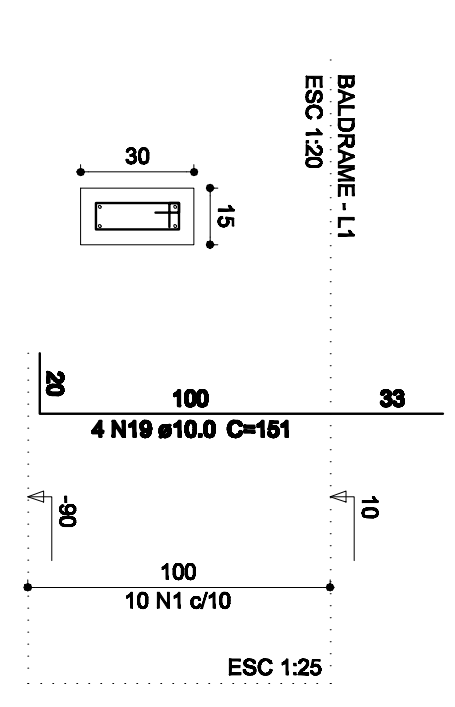
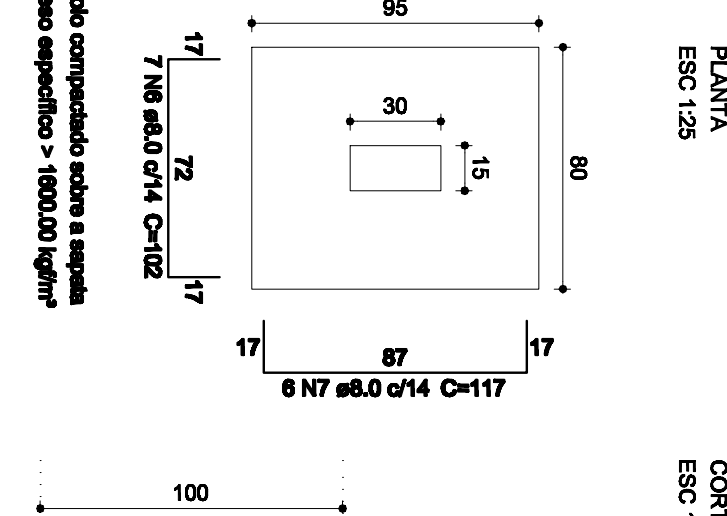


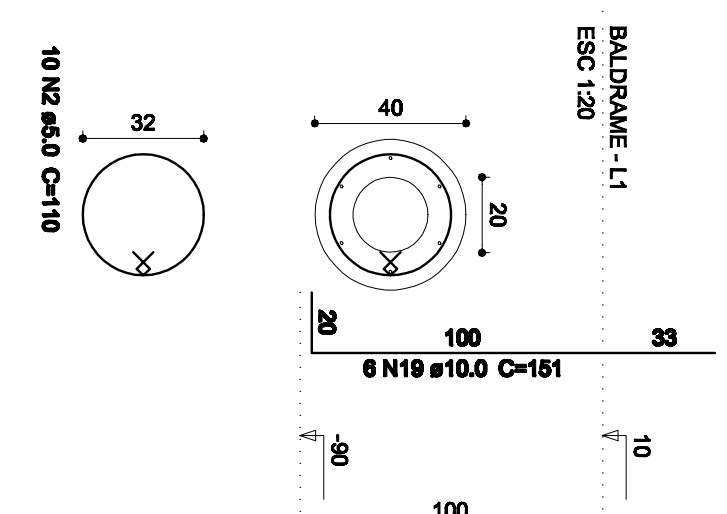
P1=P23



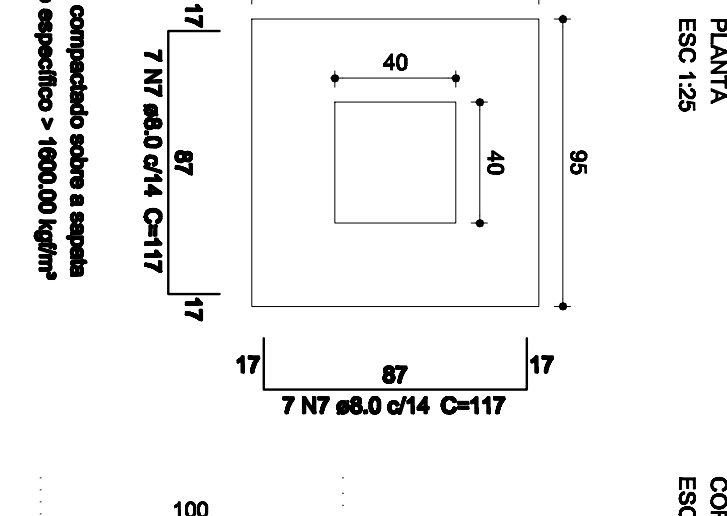
S1=S23
PLANTA
ESC 1:25



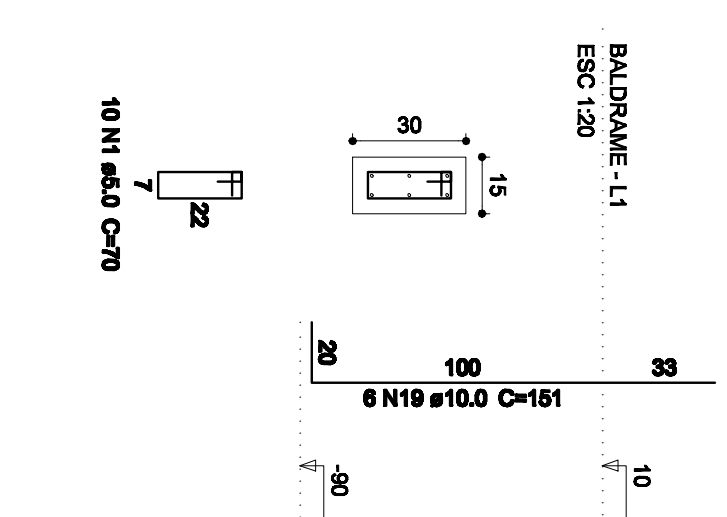
P8=P14
CORTE
ESC 1:25



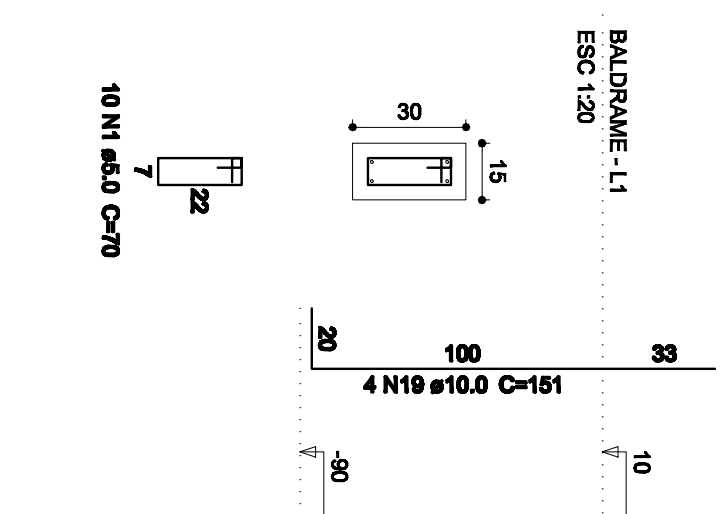
S8=S14
PLANTA
ESC 1:25



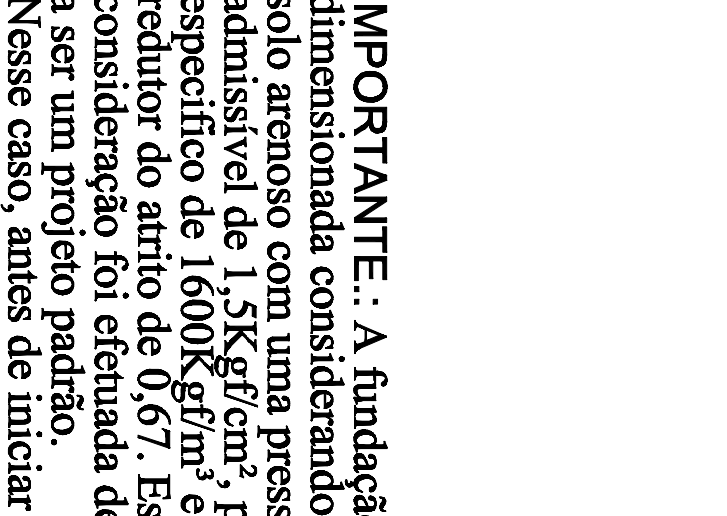
P29
CORTE
ESC 1:25



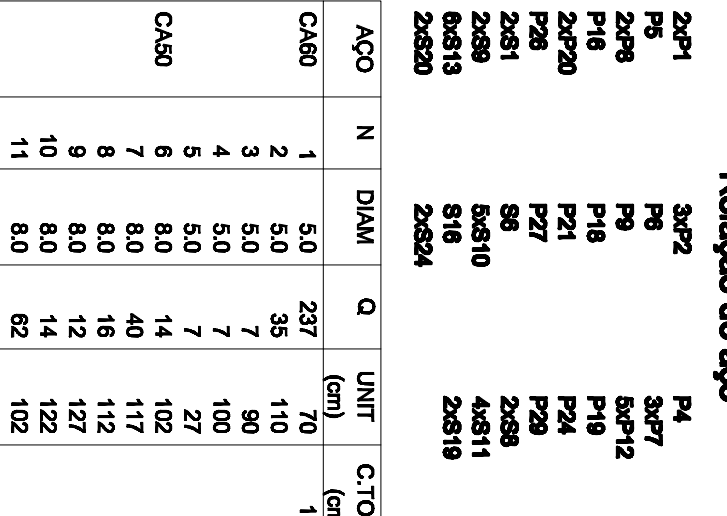
P9
CORTE
ESC 1:25



P29
CORTE
ESC 1:25



P9
CORTE
ESC 1:25



IMPORTANTE: A fundação foi dimensionada considerando um solo arenoso com uma pressão admissível de 1,5kgf/cm², peso específico de 1600kg/gf/m³ e redutor do arito de 0,67. Essa consideração foi efetuada devido a ser um projeto padrão. Nesse caso, antes de iniciar a construção, deve-se realizar a sondagem do solo a ser edificado, e no caso de não apresentar os valores de resistência apresentados acima, a fundação deve ser redimensionada.

Relatório do aço

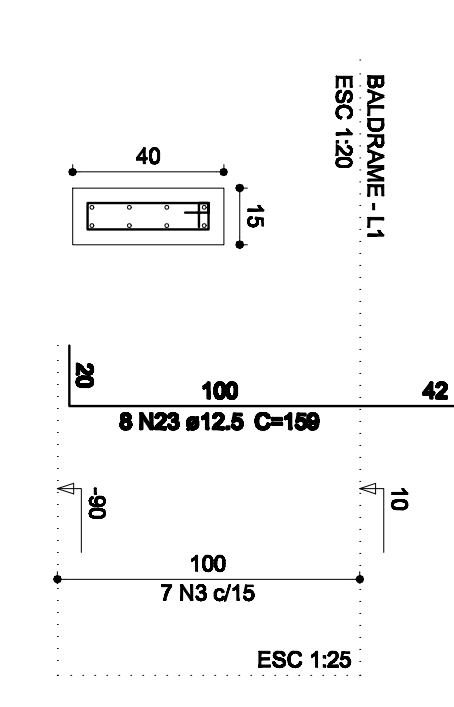
ACO	N	DIAM	Q	UNIT	C/TOTAL
CA80	1	5,0	237	70	16590
	2	5,0	35	110	3850
	3	5,0	7	30	210
	4	5,0	7	19	142
	5	5,0	7	27	178
	6	8,0	14	102	1428
	7	8,0	10	117	898
	8	8,0	16	112	1792
	9	8,0	12	127	1524
	10	8,0	8	102	816
	11	8,0	8	102	816
	12	8,0	38	117	4446
	13	8,0	35	107	3695
	14	8,0	25	122	3050
	15	8,0	24	112	2688
	16	8,0	26	142	3692
	17	8,0	26	142	3692
	18	8,0	26	142	3692
	19	10,0	112	151	16912
	20	10,0	15	141	2115
	21	10,0	11	156	1716
	22	12,5	20	159	3180

Resumo do aço

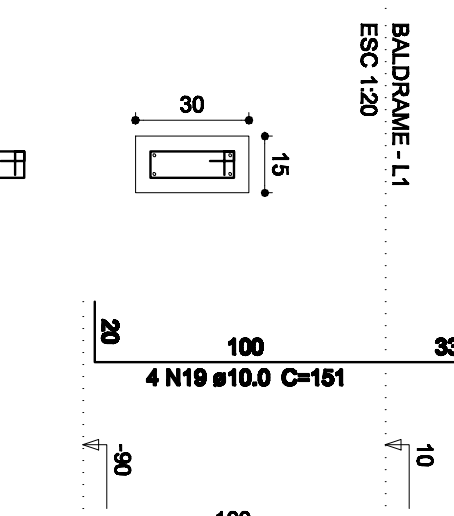
ACO	DIAM	C/TOTAL	PESO + 10 %
CA80	8,0	60,7	382,4
CA90	10,0	219,5	148,9
CA90	12,5	31,9	33,7
	5,0	219,5	37,2
PESO TOTAL			
CA80	485		
CA90	37,2		

Vol. de concreto total (C-20) = 1,55 m³
Vol. de concreto total (C-20) = 8,68 m³
Área de forma total = 8025 m²

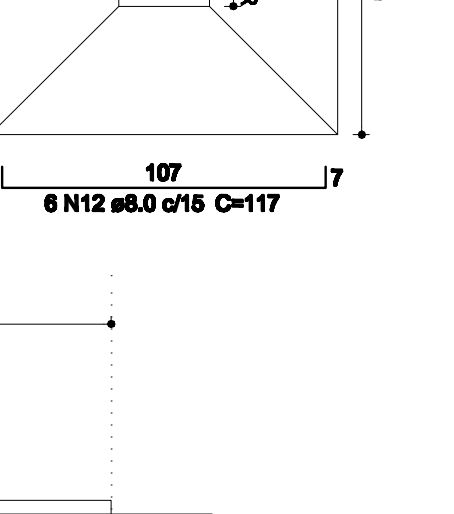
P5



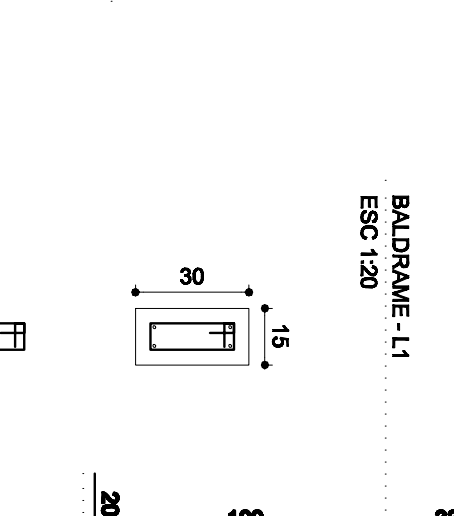
BAUDRAME - L1
ESC 1:20



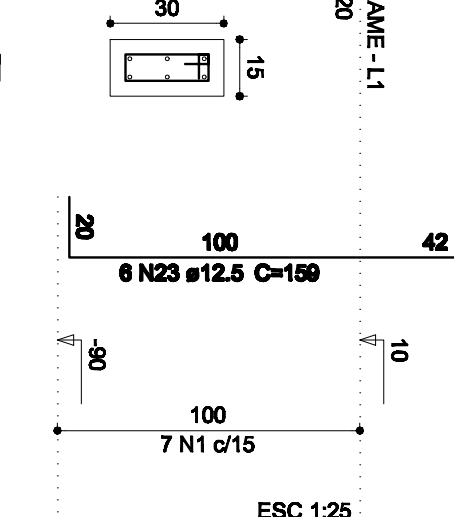
P7=P11=P15



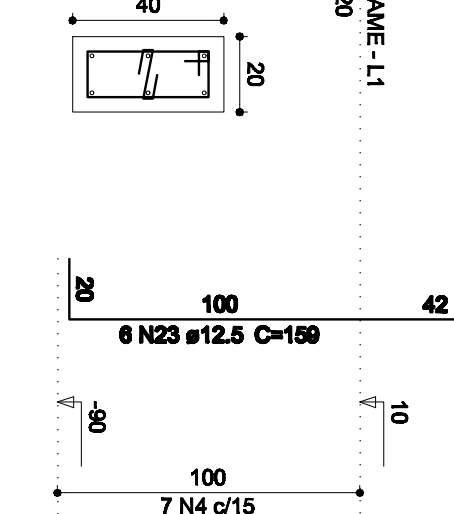
S5=S7=S11=S15
PLANTA
ESC 1:25



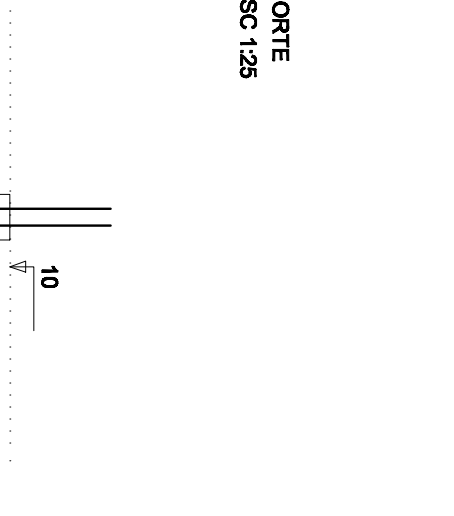
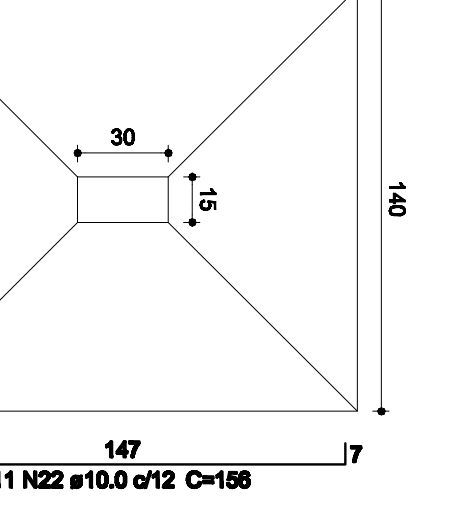
P2=P3=P10



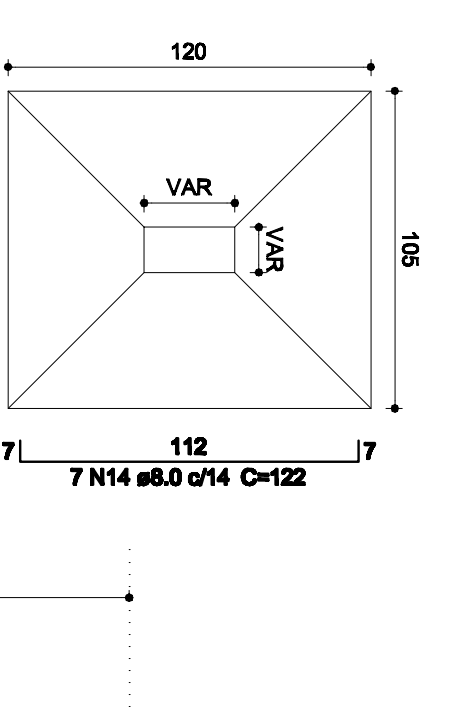
P4



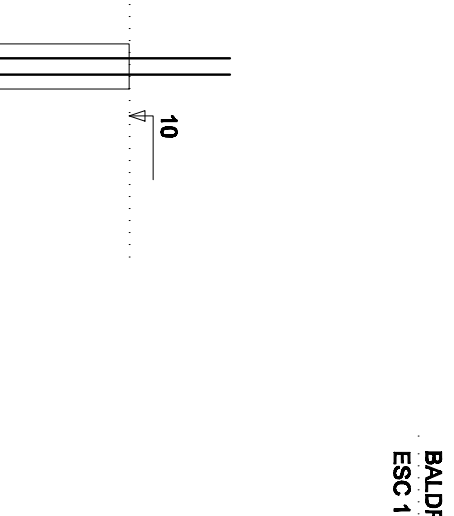
S16
PLANTA
ESC 1:25



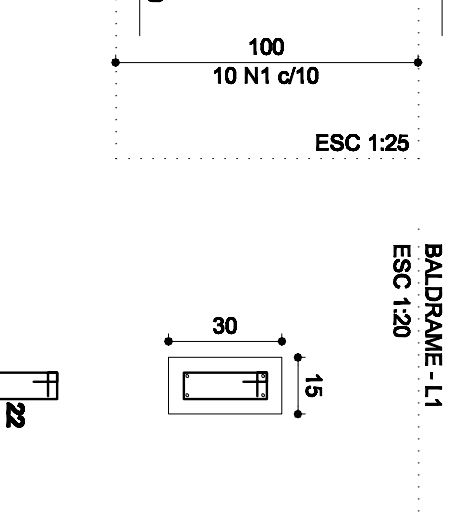
S2=S3=S4=S10=S27
PLANTA
ESC 1:25



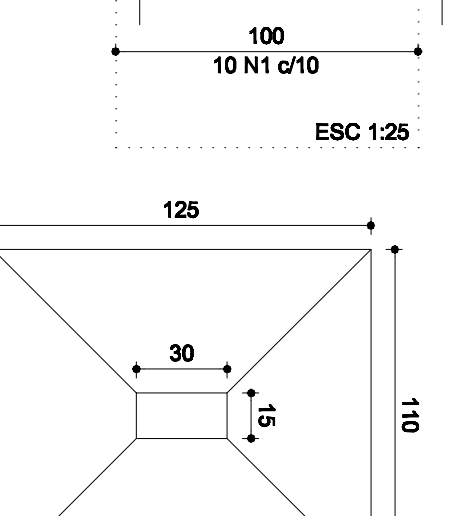
CORTE
ESC 1:25



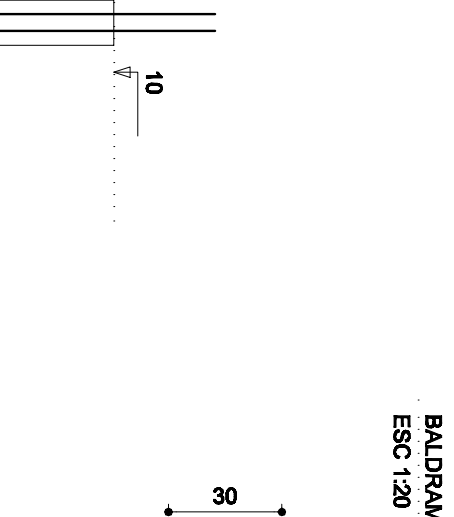
P19



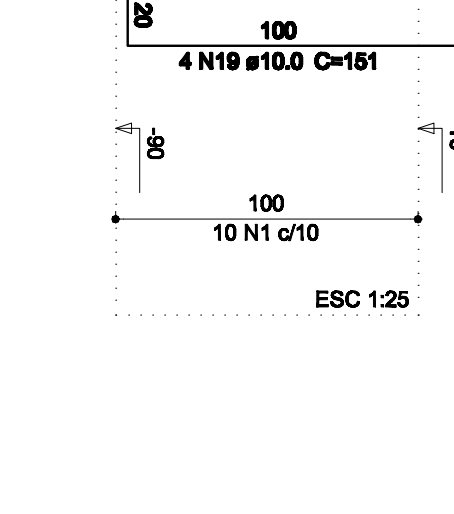
S19=S21
PLANTA
ESC 1:25



P12=P13=P17=P25=P28



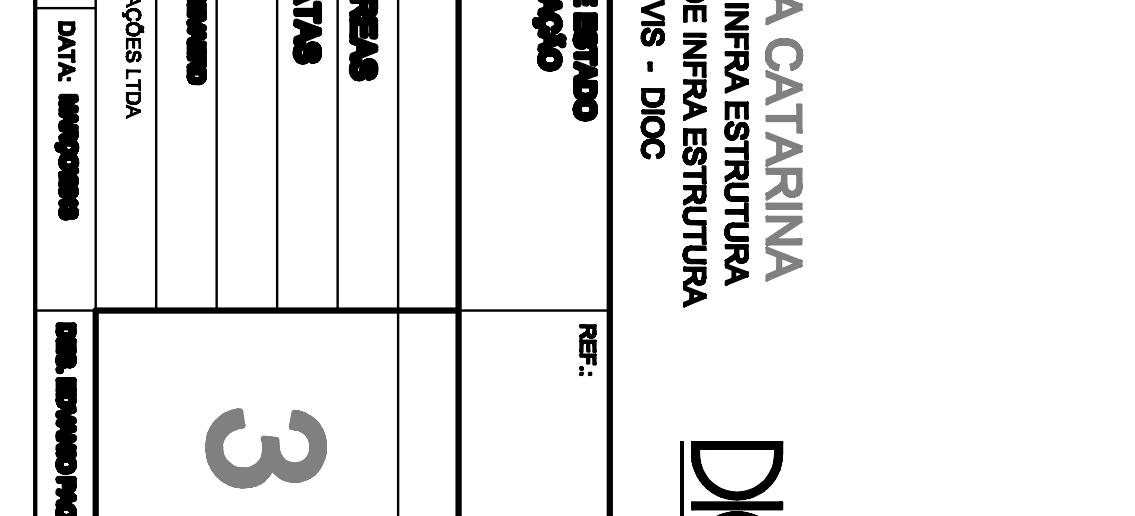
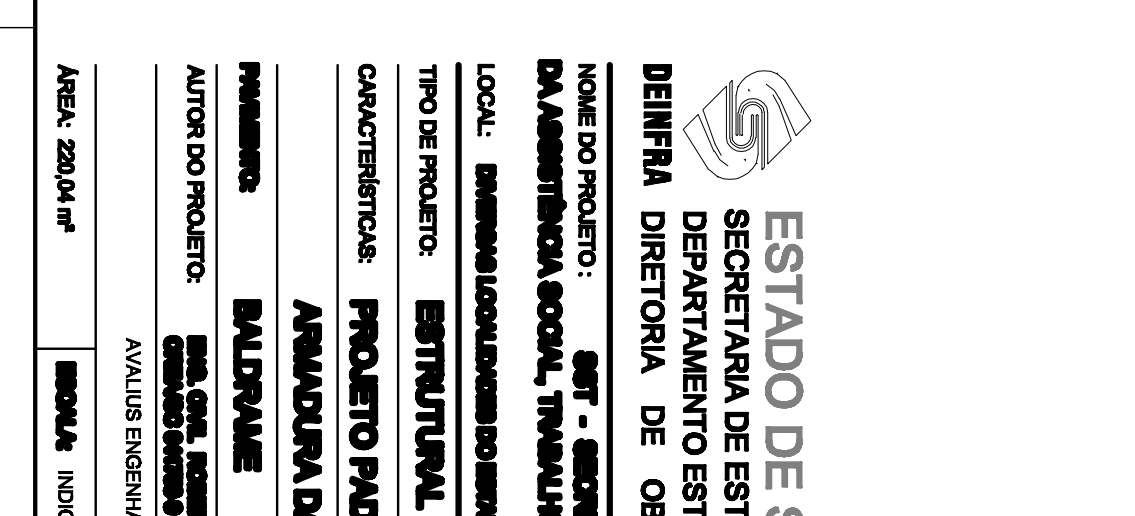
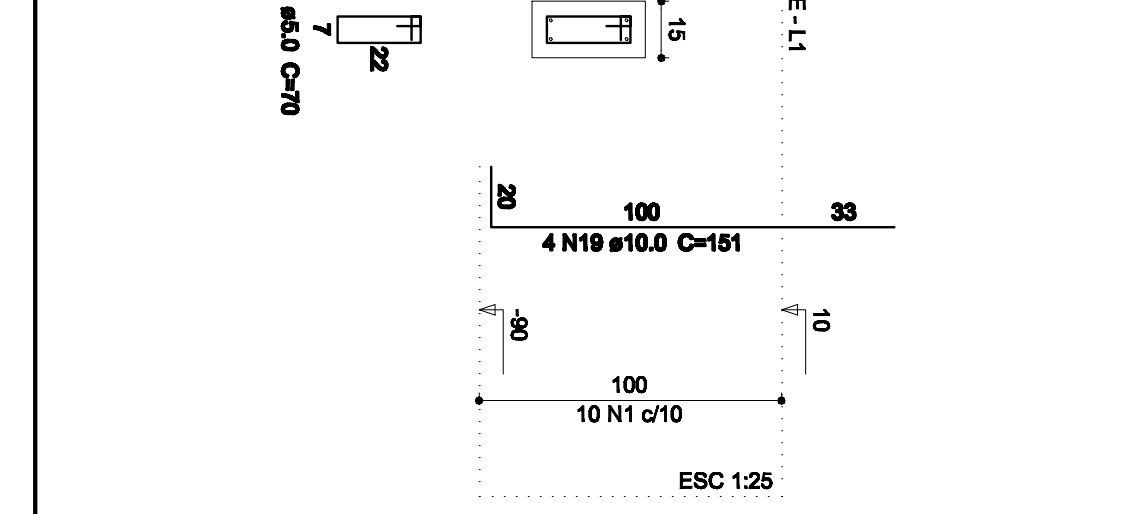
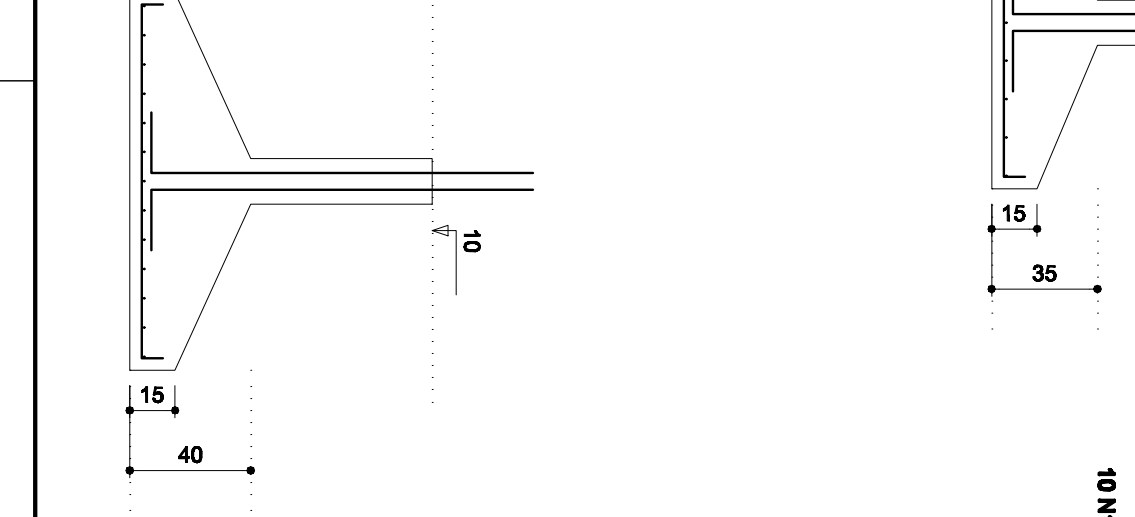
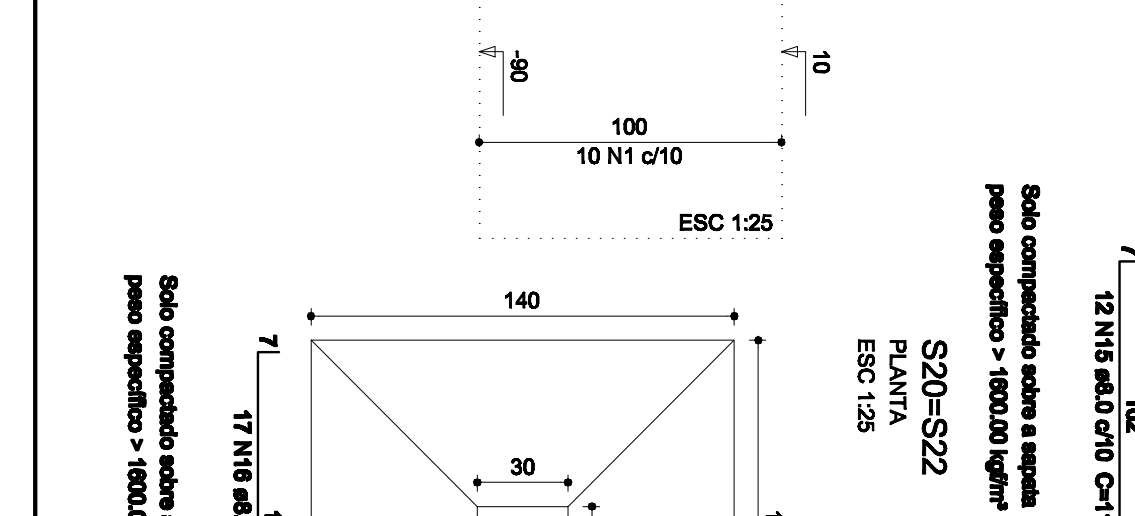
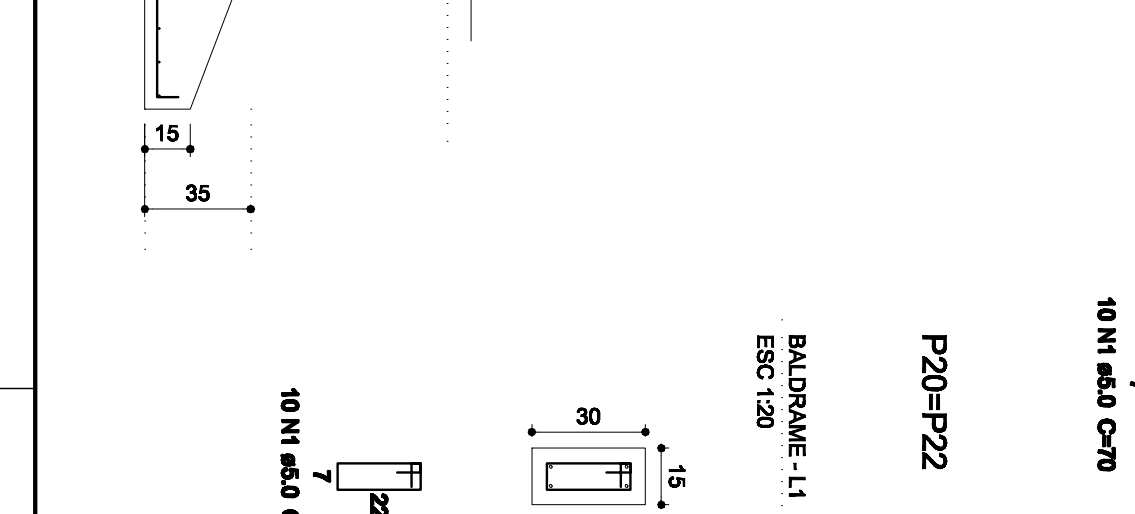
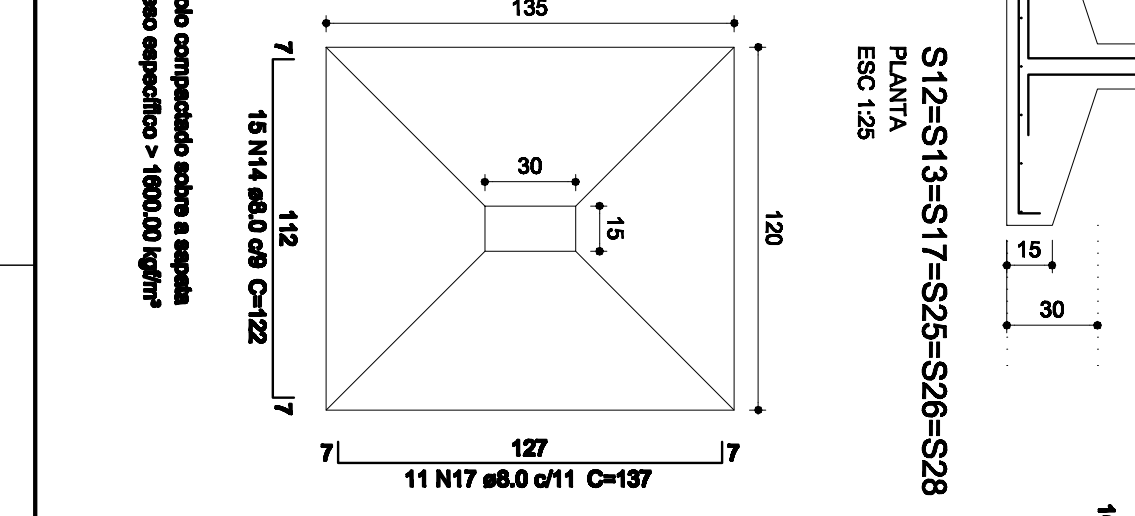
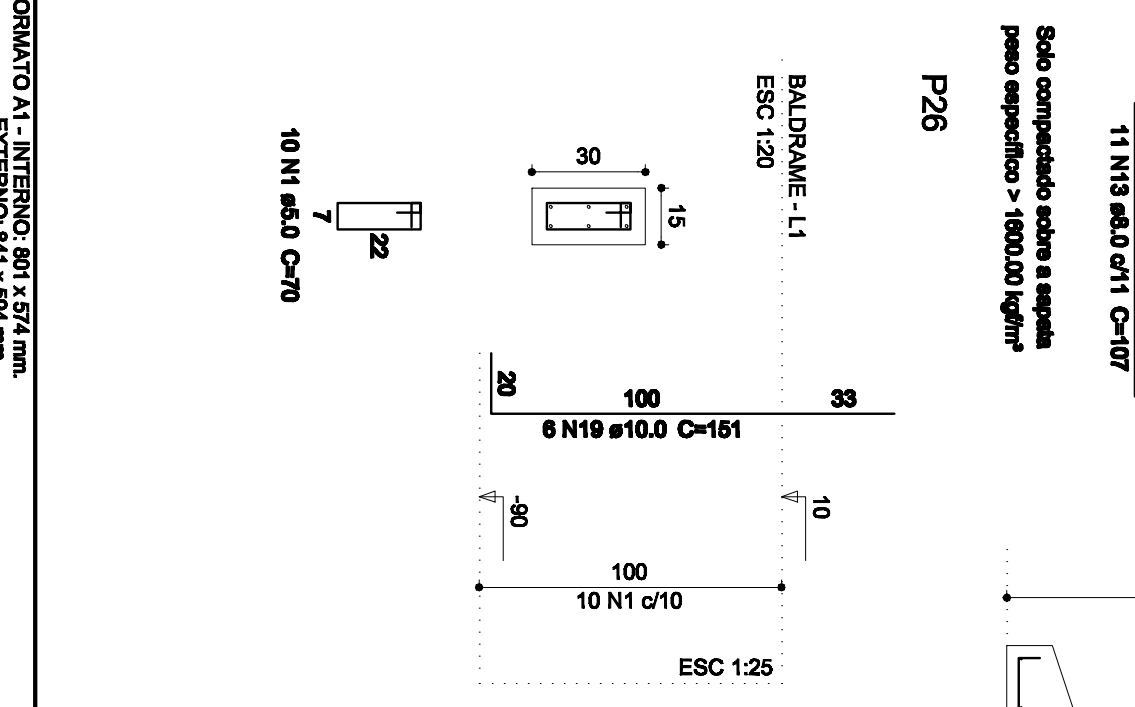
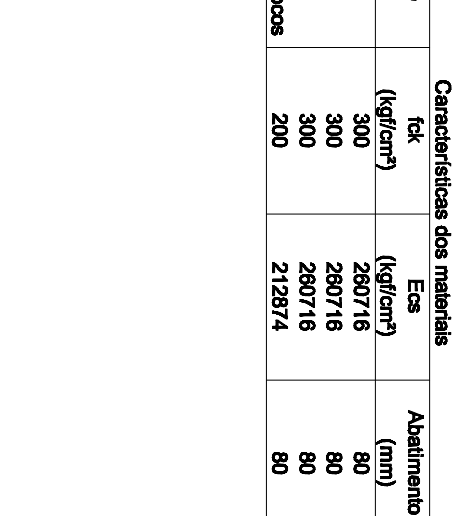
P16



P12



P16



Características das misturas

Elemento	(kg/m ³)	(kg/m ³)	Audimento (mm)
Vigas	300	280/716	80
Placas	300	280/716	80
Alças	300	280/716	80
Superfícies	200	212/574	80